

CRASTER LIMITED  
SUITE 218 GREAT WESTERN  
STUDIOS  
65 ALFRED ROAD  
LONDON  
W2 5EU  
UNITED KINGDOM  
Attn: Helena Collins

**Test Report No. BTO 332469/1a**  
***Amending and Superceding Test Report No. BTO***  
***332469/1***  
**Issue Date: 21 March 2025**

The following sample was submitted and identified by the client as:

**Sample Name:** FLOW Cooling Tray 1.1 size (x2) and FLOW Cooling Tray 1.2 size (x2)

**Sample Description:** Two sizes wooden trays, frames with thermal pack inserts. Supplied with black slate for top surface.

**Sample Reference:** BU\_FR3011 / BU\_FR30122


**Date of Receipt:** 05 March 2025

**Testing Period:** Testing conducted between 10<sup>th</sup> March 2025 and 14<sup>th</sup> March 2025.

**Test Method:** Client Protocol – *Inhouse method*

**Test Results:** See appendix

Signed for and on behalf of  
SGS United Kingdom Ltd.



Chris Walker BSc (Hons)  
Technical Manager

This document is issued by the Company subject to its General Conditions of Service, available on request or accessible at [www.sgs.com/terms\\_and\\_conditions.htm](http://www.sgs.com/terms_and_conditions.htm) and, for electronic format documents, subject to Terms and Conditions for Electronic Documents at [www.sgs.com/terms\\_e-document.htm](http://www.sgs.com/terms_e-document.htm). Attention is drawn to the limitation of liability, indemnification and jurisdiction issues defined therein. Any holder of this document is advised that information contained hereon reflects the Company's findings at the time of its intervention only and within the limits of Client's instructions, if any. The Company's sole responsibility is to its Client and this document does not exonerate parties to a transaction from exercising all their rights and obligations under the transaction documents. This document cannot be reproduced except in full, without prior written approval of the Company. Any unauthorized alteration, forgery or falsification of the content or appearance of this document is unlawful and offenders may be prosecuted to the fullest extent of the law."

Unless otherwise stated the results shown in this test report refer only to the sample(s) tested and such sample(s) are retained for 30 days only. This document cannot be reproduced except in full, without prior approval of the Company.

## Appendix

### Project Summary

Two samples of “FLOW Cooling Tray 1.1 size” and two samples of “FLOW Cooling Tray 1.2 size” were provided for a temperature performance assessment. The samples were chilled for a minimum of 24 hours and then setup as per expected as a useable condition in standard laboratory atmosphere. The temperature of the slate surface was then monitored for a four hour period to assess the products performance.

### Results

The test locations for the data can be identified as below:

#### **“FLOW Cooling Tray 1.2 size”:**



Cooling Tray set up Singles  
probe numbers.jpg



Cooling Tray set up Singles.jpg

#### **“FLOW Cooling Tray 1.1 size”:**



Cooling Tray Test Set up Double  
Probe Numbers.jpg



Cooling Tray Test Set up  
Doubles.jpg

This document is issued by the Company subject to its General Conditions of Service, available on request or accessible at [www.sgs.com/terms\\_and\\_conditions.htm](http://www.sgs.com/terms_and_conditions.htm) and, for electronic format documents, subject to Terms and Conditions for Electronic Documents at [www.sgs.com/terms\\_e-document.htm](http://www.sgs.com/terms_e-document.htm). Attention is drawn to the limitation of liability, indemnification and jurisdiction issues defined therein. Any holder of this document is advised that information contained hereon reflects the Company's findings at the time of its intervention only and within the limits of Client's instructions, if any. The Company's sole responsibility is to its Client and this document does not exonerate parties to a transaction from exercising all their rights and obligations under the transaction documents. This document cannot be reproduced except in full, without prior written approval of the Company. Any unauthorized alteration, forgery or falsification of the content or appearance of this document is unlawful and offenders may be prosecuted to the fullest extent of the law."

Unless otherwise stated the results shown in this test report refer only to the sample(s) tested and such sample(s) are retained for 30 days only. This document cannot be reproduced except in full, without prior approval of the Company.

“FLOW Cooling Tray 1.2 size”

Time (min)	Channel 1 (°C)	Channel 2 (°C)
0	15.77	17.31
1	13.51	13.76
2	10.27	10.37
3	7.75	7.93
4	5.76	5.96
5	4.26	4.36
6	2.95	3.03
7	1.87	1.93
8	1.06	1.09
9	0.42	0.47
10	-0.09	-0.04
11	-0.47	-0.43
12	-0.76	-0.71
13	-0.96	-0.87
14	-1.13	-0.95
15	-1.25	-1.02
16	-1.28	-1.07
17	-1.26	-1.05
18	-1.23	-1.01
19	-1.17	-0.93
20	-1.16	-0.83
21	-1.09	-0.74
22	-1	-0.6
23	-0.91	-0.48
24	-0.78	-0.31
25	-0.69	-0.18
26	-0.55	-0.08
27	-0.36	0.16
28	-0.29	0.18
29	-0.13	0.29
30	-0.08	0.39
31	0.05	0.48
32	0.14	0.6
33	0.25	0.72
34	0.39	0.88
35	0.51	0.98
36	0.61	1.15
37	0.76	1.32
38	0.86	1.39
39	0.97	1.48
40	1.08	1.59
41	1.23	1.71
42	1.31	1.79
43	1.4	1.91
44	1.53	2
45	1.63	2.09
46	1.72	2.19
47	1.85	2.31
48	1.95	2.42
49	2.03	2.53
50	2.16	2.62
51	2.23	2.7
52	2.33	2.81
53	2.42	2.9
54	2.52	2.98
55	2.61	3.07
56	2.7	3.16
57	2.78	3.23

This document is issued by the Company subject to its General Conditions of Service, available on request or accessible at [www.sgs.com/terms\\_and\\_conditions.htm](http://www.sgs.com/terms_and_conditions.htm) and, for electronic format documents, subject to Terms and Conditions for Electronic Documents at [www.sgs.com/terms\\_e-document.htm](http://www.sgs.com/terms_e-document.htm). Attention is drawn to the limitation of liability, indemnification and jurisdiction issues defined therein. Any holder of this document is advised that information contained hereon reflects the Company's findings at the time of its intervention only and within the limits of Client's instructions, if any. The Company's sole responsibility is to its Client and this document does not exonerate parties to a transaction from exercising all their rights and obligations under the transaction documents. This document cannot be reproduced except in full, without prior written approval of the Company. Any unauthorized alteration, forgery or falsification of the content or appearance of this document is unlawful and offenders may be prosecuted to the fullest extent of the law."

Unless otherwise stated the results shown in this test report refer only to the sample(s) tested and such sample(s) are retained for 30 days only. This document cannot be reproduced except in full, without prior approval of the Company.

58	2.87	3.3
59	2.96	3.38
60	3.03	3.45
61	3.09	3.5
62	3.18	3.59
63	3.24	3.64
64	3.32	3.7
65	3.38	3.75
66	3.48	3.85
67	3.55	3.89
68	3.61	3.93
69	3.66	3.97
70	3.72	4.01
71	3.79	4.05
72	3.84	4.09
73	3.9	4.15
74	3.95	4.17
75	4	4.2
76	4.05	4.26
77	4.09	4.27
78	4.16	4.33
79	4.21	4.37
80	4.36	4.46
81	4.46	4.57
82	4.46	4.6
83	4.55	4.72
84	4.6	4.78
85	4.7	4.81
86	4.8	4.87
87	4.87	4.86
88	4.95	4.98
89	4.89	4.99
90	4.94	5
91	4.94	5.01
92	5.04	5.09
93	5.04	5.1
94	5.08	5.17
95	5.1	5.17
96	5.15	5.22
97	5.1	5.22
98	5.17	5.27
99	5.24	5.28
100	5.22	5.29
101	5.22	5.41
102	5.28	5.35
103	5.27	5.36
104	5.32	5.38
105	5.25	5.37
106	5.37	5.41
107	5.32	5.42
108	5.29	5.44
109	5.31	5.43
110	5.3	5.42
111	5.39	5.47
112	5.43	5.51
113	5.41	5.57
114	5.39	5.5
115	5.37	5.5
116	5.47	5.57
117	5.46	5.6
118	5.53	5.59

This document is issued by the Company subject to its General Conditions of Service, available on request or accessible at [www.sgs.com/terms\\_and\\_conditions.htm](http://www.sgs.com/terms_and_conditions.htm) and, for electronic format documents, subject to Terms and Conditions for Electronic Documents at [www.sgs.com/terms\\_e-document.htm](http://www.sgs.com/terms_e-document.htm). Attention is drawn to the limitation of liability, indemnification and jurisdiction issues defined therein. Any holder of this document is advised that information contained hereon reflects the Company's findings at the time of its intervention only and within the limits of Client's instructions, if any. The Company's sole responsibility is to its Client and this document does not exonerate parties to a transaction from exercising all their rights and obligations under the transaction documents. This document cannot be reproduced except in full, without prior written approval of the Company. Any unauthorized alteration, forgery or falsification of the content or appearance of this document is unlawful and offenders may be prosecuted to the fullest extent of the law."

Unless otherwise stated the results shown in this test report refer only to the sample(s) tested and such sample(s) are retained for 30 days only. This document cannot be reproduced except in full, without prior approval of the Company.

119	5.5	5.57
120	5.48	5.63
121	5.44	5.57
122	5.54	5.6
123	5.53	5.65
124	5.58	5.67
125	5.57	5.69
126	5.65	5.76
127	5.63	5.72
128	5.62	5.73
129	5.67	5.76
130	5.63	5.86
131	5.65	5.83
132	5.73	5.86
133	5.65	5.83
134	5.76	5.87
135	5.67	5.81
136	5.67	5.82
137	5.74	5.93
138	5.73	5.9
139	5.68	5.84
140	5.76	5.98
141	5.73	5.98
142	5.7	5.96
143	5.73	5.97
144	5.75	6
145	5.68	5.98
146	5.76	5.98
147	5.75	6.01
148	5.83	6.06
149	5.85	6.04
150	5.85	6.07
151	5.84	6.06
152	5.93	6.06
153	5.88	6.02
154	5.89	6.05
155	5.84	6.04
156	5.92	6.08
157	5.92	6.09
158	5.95	6.1
159	6.01	6.06
160	6.05	6.16
161	5.97	6.1
162	6.07	6.14
163	6.04	6.17
164	6.11	6.16
165	6.08	6.15
166	6.13	6.18
167	6.09	6.2
168	6.1	6.18
169	6.21	6.24
170	6.15	6.15
171	6.13	6.16
172	6.18	6.2
173	6.2	6.29
174	6.2	6.23
175	6.16	6.22
176	6.16	6.23
177	6.21	6.29
178	6.28	6.33
179	6.25	6.29

This document is issued by the Company subject to its General Conditions of Service, available on request or accessible at [www.sgs.com/terms\\_and\\_conditions.htm](http://www.sgs.com/terms_and_conditions.htm) and, for electronic format documents, subject to Terms and Conditions for Electronic Documents at [www.sgs.com/terms\\_e-document.htm](http://www.sgs.com/terms_e-document.htm). Attention is drawn to the limitation of liability, indemnification and jurisdiction issues defined therein. Any holder of this document is advised that information contained hereon reflects the Company's findings at the time of its intervention only and within the limits of Client's instructions, if any. The Company's sole responsibility is to its Client and this document does not exonerate parties to a transaction from exercising all their rights and obligations under the transaction documents. This document cannot be reproduced except in full, without prior written approval of the Company. Any unauthorized alteration, forgery or falsification of the content or appearance of this document is unlawful and offenders may be prosecuted to the fullest extent of the law."

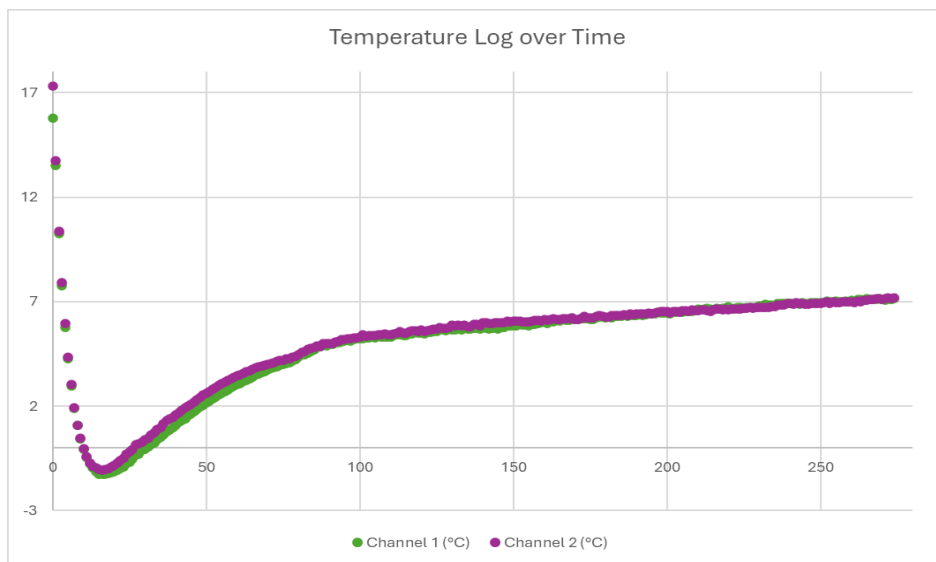
Unless otherwise stated the results shown in this test report refer only to the sample(s) tested and such sample(s) are retained for 30 days only. This document cannot be reproduced except in full, without prior approval of the Company.

180	6.23	6.26
181	6.25	6.28
182	6.21	6.32
183	6.3	6.32
184	6.31	6.33
185	6.31	6.33
186	6.32	6.39
187	6.3	6.35
188	6.33	6.41
189	6.34	6.39
190	6.33	6.41
191	6.37	6.42
192	6.35	6.42
193	6.37	6.43
194	6.4	6.44
195	6.4	6.43
196	6.43	6.47
197	6.51	6.5
198	6.46	6.52
199	6.47	6.53
200	6.47	6.52
201	6.4	6.46
202	6.5	6.52
203	6.48	6.54
204	6.52	6.5
205	6.48	6.55
206	6.54	6.58
207	6.54	6.54
208	6.54	6.62
209	6.56	6.58
210	6.63	6.57
211	6.61	6.61
212	6.64	6.61
213	6.67	6.58
214	6.64	6.54
215	6.62	6.59
216	6.68	6.64
217	6.65	6.65
218	6.67	6.62
219	6.68	6.64
220	6.76	6.61
221	6.65	6.63
222	6.67	6.63
223	6.71	6.66
224	6.73	6.65
225	6.7	6.7
226	6.71	6.67
227	6.74	6.71
228	6.72	6.7
229	6.74	6.72
230	6.79	6.74
231	6.79	6.71
232	6.86	6.71
233	6.83	6.73
234	6.82	6.76
235	6.82	6.77
236	6.9	6.84
237	6.9	6.82
238	6.91	6.85
239	6.9	6.9
240	6.93	6.9

This document is issued by the Company subject to its General Conditions of Service, available on request or accessible at [www.sgs.com/terms\\_and\\_conditions.htm](http://www.sgs.com/terms_and_conditions.htm) and, for electronic format documents, subject to Terms and Conditions for Electronic Documents at [www.sgs.com/terms\\_e-document.htm](http://www.sgs.com/terms_e-document.htm). Attention is drawn to the limitation of liability, indemnification and jurisdiction issues defined therein. Any holder of this document is advised that information contained hereon reflects the Company's findings at the time of its intervention only and within the limits of Client's instructions, if any. The Company's sole responsibility is to its Client and this document does not exonerate parties to a transaction from exercising all their rights and obligations under the transaction documents. This document cannot be reproduced except in full, without prior written approval of the Company. Any unauthorized alteration, forgery or falsification of the content or appearance of this document is unlawful and offenders may be prosecuted to the fullest extent of the law."

Unless otherwise stated the results shown in this test report refer only to the sample(s) tested and such sample(s) are retained for 30 days only. This document cannot be reproduced except in full, without prior approval of the Company.

241	6.92	6.89
242	6.91	6.94
243	6.89	6.9
244	6.95	6.92
245	6.92	6.89
246	6.92	6.88
247	6.96	6.92
248	6.94	6.93
249	6.94	6.9
250	6.95	6.92
251	6.95	6.94
252	7.02	6.98
253	6.98	6.91
254	6.99	7.01
255	7.03	6.96
256	7.01	6.95
257	6.99	7
258	7.02	7
259	7	7
260	7.08	7
261	7.04	6.95
262	7.1	7.03
263	7.1	7.01
264	7.08	7.06
265	7.14	7.05
266	7.11	7.1
267	7.09	7.11
268	7.11	7.15
269	7.13	7.15
270	7.1	7.1
271	7.08	7.13
272	7.12	7.18
273	7.09	7.15
274	7.13	7.18
Max	15.77	17.31
Min	-1.28	-1.07



This document is issued by the Company subject to its General Conditions of Service, available on request or accessible at [www.sgs.com/terms\\_and\\_conditions.htm](http://www.sgs.com/terms_and_conditions.htm) and, for electronic format documents, subject to Terms and Conditions for Electronic Documents at [www.sgs.com/terms\\_e-document.htm](http://www.sgs.com/terms_e-document.htm). Attention is drawn to the limitation of liability, indemnification and jurisdiction issues defined therein. Any holder of this document is advised that information contained hereon reflects the Company's findings at the time of its intervention only and within the limits of Client's instructions, if any. The Company's sole responsibility is to its Client and this document does not exonerate parties to a transaction from exercising all their rights and obligations under the transaction documents. This document cannot be reproduced except in full, without prior written approval of the Company. Any unauthorized alteration, forgery or falsification of the content or appearance of this document is unlawful and offenders may be prosecuted to the fullest extent of the law."

Unless otherwise stated the results shown in this test report refer only to the sample(s) tested and such sample(s) are retained for 30 days only. This document cannot be reproduced except in full, without prior approval of the Company.

“FLOW Cooling Tray 1.1 size”

Time (min)	Channel 1 (°C)	Channel 2 (°C)	Channel 3 (°C)	Channel 4 (°C)
0	9.33	11.87	15.4	15.28
1	5.93	8.3	12.28	11.46
2	0.84	3.71	7.51	6.72
3	-1.91	1.19	4.27	3.68
4	-3.42	-0.45	2.05	1.73
5	-4.24	-1.45	0.5	0.33
6	-4.62	-2.05	-0.59	-0.63
7	-4.79	-2.45	-1.36	-1.3
8	-4.82	-2.66	-1.86	-1.76
9	-4.77	-2.76	-2.24	-2.08
10	-4.68	-2.8	-2.49	-2.29
11	-4.54	-2.8	-2.62	-2.42
12	-4.4	-2.76	-2.71	-2.5
13	-4.23	-2.67	-2.71	-2.53
14	-4.06	-2.57	-2.68	-2.52
15	-3.88	-2.47	-2.63	-2.48
16	-3.7	-2.36	-2.57	-2.43
17	-3.53	-2.24	-2.49	-2.36
18	-3.35	-2.11	-2.39	-2.28
19	-3.16	-1.94	-2.24	-2.19
20	-2.98	-1.8	-2.11	-2.07
21	-2.79	-1.67	-2	-1.94
22	-2.61	-1.53	-1.87	-1.8
23	-2.44	-1.39	-1.74	-1.69
24	-2.26	-1.25	-1.61	-1.58
25	-2.08	-1.09	-1.46	-1.45
26	-1.9	-0.95	-1.31	-1.3
27	-1.74	-0.81	-1.18	-1.17
28	-1.57	-0.69	-1.06	-1.04
29	-1.4	-0.54	-0.91	-0.92
30	-1.24	-0.39	-0.78	-0.79
31	-1.07	-0.28	-0.65	-0.66
32	-0.91	-0.14	-0.51	-0.52
33	-0.77	-0.02	-0.4	-0.4
34	-0.62	0.11	-0.27	-0.29
35	-0.46	0.25	-0.14	-0.15
36	-0.31	0.37	0	-0.02
37	-0.07	0.53	0.21	0.12
38	0.04	0.63	0.27	0.24
39	0.14	0.7	0.38	0.35
40	0.26	0.83	0.48	0.46
41	0.39	0.97	0.63	0.57
42	0.53	1.09	0.72	0.67
43	0.63	1.16	0.83	0.81
44	0.77	1.27	0.92	0.88
45	0.88	1.36	1.01	0.99
46	0.99	1.47	1.11	1.08
47	1.09	1.54	1.2	1.18
48	1.2	1.64	1.29	1.28
49	1.31	1.7	1.37	1.37
50	1.42	1.81	1.47	1.46
51	1.53	1.87	1.57	1.56
52	1.67	2.01	1.69	1.66
53	1.73	2.05	1.75	1.76
54	1.8	2.12	1.81	1.82
55	1.88	2.18	1.87	1.9

This document is issued by the Company subject to its General Conditions of Service, available on request or accessible at [www.sgs.com/terms\\_and\\_conditions.htm](http://www.sgs.com/terms_and_conditions.htm) and, for electronic format documents, subject to Terms and Conditions for Electronic Documents at [www.sgs.com/terms\\_e-document.htm](http://www.sgs.com/terms_e-document.htm). Attention is drawn to the limitation of liability, indemnification and jurisdiction issues defined therein. Any holder of this document is advised that information contained hereon reflects the Company's findings at the time of its intervention only and within the limits of Client's instructions, if any. The Company's sole responsibility is to its Client and this document does not exonerate parties to a transaction from exercising all their rights and obligations under the transaction documents. This document cannot be reproduced except in full, without prior written approval of the Company. Any unauthorized alteration, forgery or falsification of the content or appearance of this document is unlawful and offenders may be prosecuted to the fullest extent of the law."

Unless otherwise stated the results shown in this test report refer only to the sample(s) tested and such sample(s) are retained for 30 days only. This document cannot be reproduced except in full, without prior approval of the Company.

56	1.97	2.25	1.94	1.98
57	2.06	2.34	2.02	2.06
58	2.14	2.41	2.11	2.15
59	2.21	2.47	2.19	2.22
60	2.27	2.52	2.25	2.3
61	2.35	2.58	2.29	2.38
62	2.41	2.65	2.37	2.43
63	2.47	2.69	2.41	2.5
64	2.54	2.75	2.47	2.56
65	2.59	2.78	2.51	2.64
66	2.65	2.84	2.55	2.69
67	2.7	2.88	2.59	2.76
68	2.74	2.93	2.65	2.8
69	2.79	2.97	2.7	2.85
70	2.83	3	2.71	2.91
71	2.91	3.05	2.77	2.97
72	2.97	3.1	2.81	3.01
73	3.02	3.12	2.85	3.04
74	3.08	3.16	2.89	3.09
75	3.13	3.19	2.93	3.13
76	3.18	3.22	2.96	3.17
77	3.22	3.25	2.99	3.18
78	3.34	3.36	3.17	3.32
79	3.4	3.34	3.14	3.31
80	3.4	3.35	3.15	3.34
81	3.41	3.37	3.15	3.33
82	3.44	3.37	3.15	3.34
83	3.46	3.4	3.18	3.36
84	3.48	3.41	3.19	3.39
85	3.51	3.44	3.21	3.4
86	3.55	3.47	3.23	3.42
87	3.59	3.5	3.26	3.43
88	3.63	3.51	3.27	3.46
89	3.65	3.52	3.29	3.48
90	3.67	3.56	3.31	3.49
91	3.71	3.57	3.34	3.51
92	3.73	3.6	3.35	3.52
93	3.75	3.62	3.38	3.55
94	3.77	3.62	3.39	3.57
95	3.78	3.64	3.41	3.58
96	3.83	3.66	3.43	3.6
97	3.84	3.68	3.46	3.63
98	3.86	3.69	3.47	3.64
99	3.87	3.7	3.49	3.66
100	3.89	3.74	3.51	3.68
101	3.91	3.74	3.53	3.69
102	3.92	3.74	3.53	3.71
103	3.93	3.78	3.53	3.72
104	3.95	3.77	3.54	3.74
105	3.96	3.76	3.56	3.76
106	4.01	3.82	3.61	3.78
107	4.05	3.84	3.62	3.79
108	4.08	3.86	3.65	3.83
109	4.08	3.88	3.68	3.86
110	4.09	3.9	3.68	3.86
111	4.09	3.89	3.68	3.87
112	4.09	3.9	3.68	3.88
113	4.1	3.91	3.7	3.89
114	4.13	3.92	3.7	3.92
115	4.14	3.94	3.72	3.92
116	4.16	3.97	3.74	3.96

This document is issued by the Company subject to its General Conditions of Service, available on request or accessible at [www.sgs.com/terms\\_and\\_conditions.htm](http://www.sgs.com/terms_and_conditions.htm) and, for electronic format documents, subject to Terms and Conditions for Electronic Documents at [www.sgs.com/terms\\_e-document.htm](http://www.sgs.com/terms_e-document.htm). Attention is drawn to the limitation of liability, indemnification and jurisdiction issues defined therein. Any holder of this document is advised that information contained hereon reflects the Company's findings at the time of its intervention only and within the limits of Client's instructions, if any. The Company's sole responsibility is to its Client and this document does not exonerate parties to a transaction from exercising all their rights and obligations under the transaction documents. This document cannot be reproduced except in full, without prior written approval of the Company. Any unauthorized alteration, forgery or falsification of the content or appearance of this document is unlawful and offenders may be prosecuted to the fullest extent of the law."

Unless otherwise stated the results shown in this test report refer only to the sample(s) tested and such sample(s) are retained for 30 days only. This document cannot be reproduced except in full, without prior approval of the Company.

117	4.17	3.99	3.75	3.97
118	4.18	3.98	3.77	3.98
119	4.19	3.99	3.77	3.98
120	4.2	4.01	3.78	4
121	4.21	4.02	3.79	4.01
122	4.22	4.03	3.8	4.03
123	4.23	4.04	3.82	4.03
124	4.25	4.07	3.84	4.05
125	4.24	4.08	3.83	4.06
126	4.27	4.09	3.86	4.1
127	4.27	4.09	3.86	4.08
128	4.29	4.13	3.88	4.13
129	4.31	4.13	3.88	4.14
130	4.31	4.16	3.9	4.13
131	4.33	4.17	3.91	4.17
132	4.34	4.19	3.93	4.18
133	4.34	4.2	3.92	4.18
134	4.35	4.21	3.93	4.2
135	4.36	4.21	3.93	4.21
136	4.37	4.22	3.94	4.22
137	4.36	4.21	3.94	4.22
138	4.39	4.26	3.97	4.24
139	4.4	4.27	3.99	4.26
140	4.42	4.3	4.01	4.28
141	4.43	4.3	4.01	4.29
142	4.42	4.3	4.02	4.3
143	4.44	4.31	4.03	4.31
144	4.45	4.33	4.03	4.32
145	4.44	4.33	4.02	4.34
146	4.46	4.36	4.03	4.34
147	4.46	4.37	4.05	4.35
148	4.48	4.38	4.05	4.37
149	4.49	4.4	4.07	4.39
150	4.5	4.4	4.08	4.38
151	4.51	4.42	4.08	4.41
152	4.53	4.43	4.09	4.42
153	4.55	4.45	4.1	4.44
154	4.56	4.46	4.12	4.44
155	4.57	4.47	4.14	4.46
156	4.57	4.48	4.14	4.5
157	4.58	4.48	4.17	4.51
158	4.6	4.52	4.18	4.51
159	4.62	4.53	4.18	4.53
160	4.65	4.53	4.2	4.54
161	4.66	4.53	4.19	4.55
162	4.65	4.56	4.21	4.56
163	4.65	4.56	4.22	4.56
164	4.68	4.65	4.25	4.58
165	4.68	4.6	4.24	4.6
166	4.7	4.61	4.25	4.6
167	4.72	4.64	4.27	4.61
168	4.7	4.61	4.29	4.62
169	4.69	4.63	4.28	4.61
170	4.72	4.65	4.3	4.64
171	4.72	4.65	4.31	4.64
172	4.74	4.7	4.35	4.68
173	4.82	4.68	4.44	4.7
174	4.91	4.77	4.46	4.71
175	4.87	4.74	4.42	4.73
176	4.83	4.76	4.4	4.73
177	4.83	4.77	4.39	4.75

This document is issued by the Company subject to its General Conditions of Service, available on request or accessible at [www.sgs.com/terms\\_and\\_conditions.htm](http://www.sgs.com/terms_and_conditions.htm) and, for electronic format documents, subject to Terms and Conditions for Electronic Documents at [www.sgs.com/terms\\_e-document.htm](http://www.sgs.com/terms_e-document.htm). Attention is drawn to the limitation of liability, indemnification and jurisdiction issues defined therein. Any holder of this document is advised that information contained hereon reflects the Company's findings at the time of its intervention only and within the limits of Client's instructions, if any. The Company's sole responsibility is to its Client and this document does not exonerate parties to a transaction from exercising all their rights and obligations under the transaction documents. This document cannot be reproduced except in full, without prior written approval of the Company. Any unauthorized alteration, forgery or falsification of the content or appearance of this document is unlawful and offenders may be prosecuted to the fullest extent of the law."

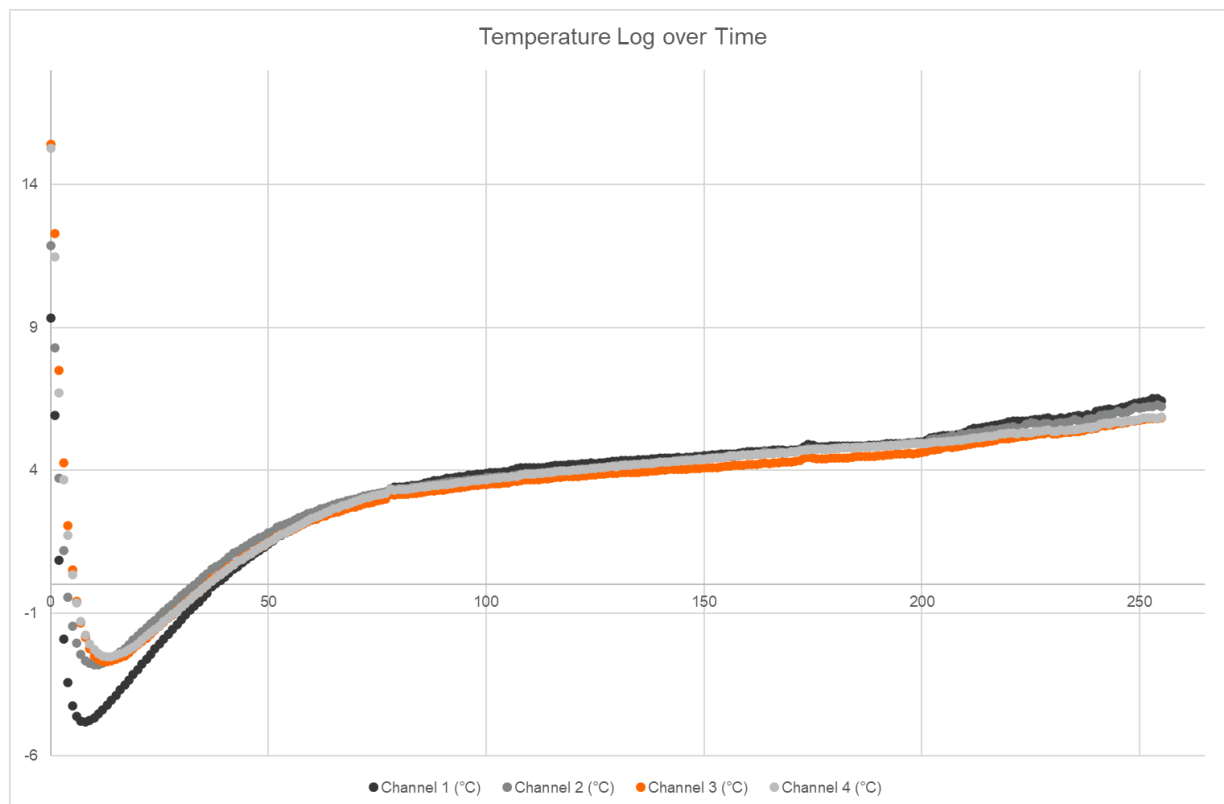
Unless otherwise stated the results shown in this test report refer only to the sample(s) tested and such sample(s) are retained for 30 days only. This document cannot be reproduced except in full, without prior approval of the Company.

178	4.83	4.73	4.41	4.75
179	4.84	4.76	4.42	4.75
180	4.86	4.76	4.43	4.76
181	4.85	4.78	4.43	4.77
182	4.85	4.79	4.43	4.78
183	4.85	4.79	4.44	4.8
184	4.85	4.79	4.45	4.78
185	4.86	4.81	4.47	4.8
186	4.86	4.82	4.47	4.79
187	4.86	4.81	4.47	4.82
188	4.87	4.83	4.48	4.82
189	4.87	4.84	4.49	4.83
190	4.89	4.84	4.51	4.83
191	4.91	4.87	4.52	4.85
192	4.92	4.87	4.53	4.86
193	4.93	4.87	4.55	4.88
194	4.92	4.89	4.56	4.88
195	4.92	4.92	4.57	4.88
196	4.94	4.92	4.57	4.9
197	4.95	4.94	4.59	4.91
198	4.96	4.95	4.57	4.92
199	4.99	4.95	4.6	4.92
200	5	4.97	4.63	4.92
201	5.05	4.97	4.64	4.93
202	5.14	5.08	4.72	4.95
203	5.16	5.11	4.7	4.98
204	5.19	5.11	4.74	5
205	5.21	5.12	4.78	5
206	5.22	5.16	4.82	5.01
207	5.21	5.22	4.79	5.02
208	5.24	5.16	4.83	5.04
209	5.26	5.26	4.86	5.05
210	5.33	5.23	4.88	5.07
211	5.42	5.29	4.91	5.11
212	5.47	5.29	4.94	5.14
213	5.47	5.32	4.95	5.13
214	5.49	5.34	4.97	5.16
215	5.53	5.39	5	5.2
216	5.54	5.4	5.03	5.19
217	5.57	5.42	5.06	5.22
218	5.62	5.45	5.09	5.28
219	5.63	5.48	5.1	5.28
220	5.69	5.49	5.11	5.3
221	5.73	5.53	5.14	5.29
222	5.72	5.47	5.16	5.28
223	5.71	5.5	5.18	5.32
224	5.73	5.6	5.19	5.3
225	5.76	5.68	5.22	5.29
226	5.79	5.63	5.24	5.36
227	5.79	5.58	5.27	5.37
228	5.8	5.63	5.28	5.39
229	5.83	5.65	5.32	5.4
230	5.78	5.59	5.27	5.36
231	5.79	5.63	5.26	5.36
232	5.84	5.66	5.31	5.42
233	5.81	5.68	5.34	5.38
234	5.87	5.7	5.34	5.41
235	5.89	5.77	5.35	5.41
236	5.91	5.71	5.36	5.45
237	5.89	5.68	5.39	5.46
238	5.95	5.77	5.43	5.49

This document is issued by the Company subject to its General Conditions of Service, available on request or accessible at [www.sgs.com/terms\\_and\\_conditions.htm](http://www.sgs.com/terms_and_conditions.htm) and, for electronic format documents, subject to Terms and Conditions for Electronic Documents at [www.sgs.com/terms\\_e-document.htm](http://www.sgs.com/terms_e-document.htm). Attention is drawn to the limitation of liability, indemnification and jurisdiction issues defined therein. Any holder of this document is advised that information contained hereon reflects the Company's findings at the time of its intervention only and within the limits of Client's instructions, if any. The Company's sole responsibility is to its Client and this document does not exonerate parties to a transaction from exercising all their rights and obligations under the transaction documents. This document cannot be reproduced except in full, without prior written approval of the Company. Any unauthorized alteration, forgery or falsification of the content or appearance of this document is unlawful and offenders may be prosecuted to the fullest extent of the law."

Unless otherwise stated the results shown in this test report refer only to the sample(s) tested and such sample(s) are retained for 30 days only. This document cannot be reproduced except in full, without prior approval of the Company.

239	5.93	5.8	5.44	5.48
240	6.05	5.81	5.46	5.52
241	6.1	5.91	5.54	5.6
242	6.13	5.96	5.56	5.63
243	6.15	5.95	5.59	5.62
244	6.12	5.97	5.58	5.66
245	6.14	6.06	5.64	5.7
246	6.19	6	5.64	5.68
247	6.23	6.03	5.67	5.72
248	6.28	6.11	5.72	5.71
249	6.35	6.2	5.71	5.75
250	6.37	6.18	5.75	5.78
251	6.39	6.2	5.77	5.83
252	6.43	6.24	5.8	5.83
253	6.51	6.23	5.81	5.84
254	6.51	6.28	5.82	5.82
255	6.44	6.24	5.83	5.86
Max	9.33	11.87	15.4	15.28
Min	-4.82	-2.8	-2.71	-2.53



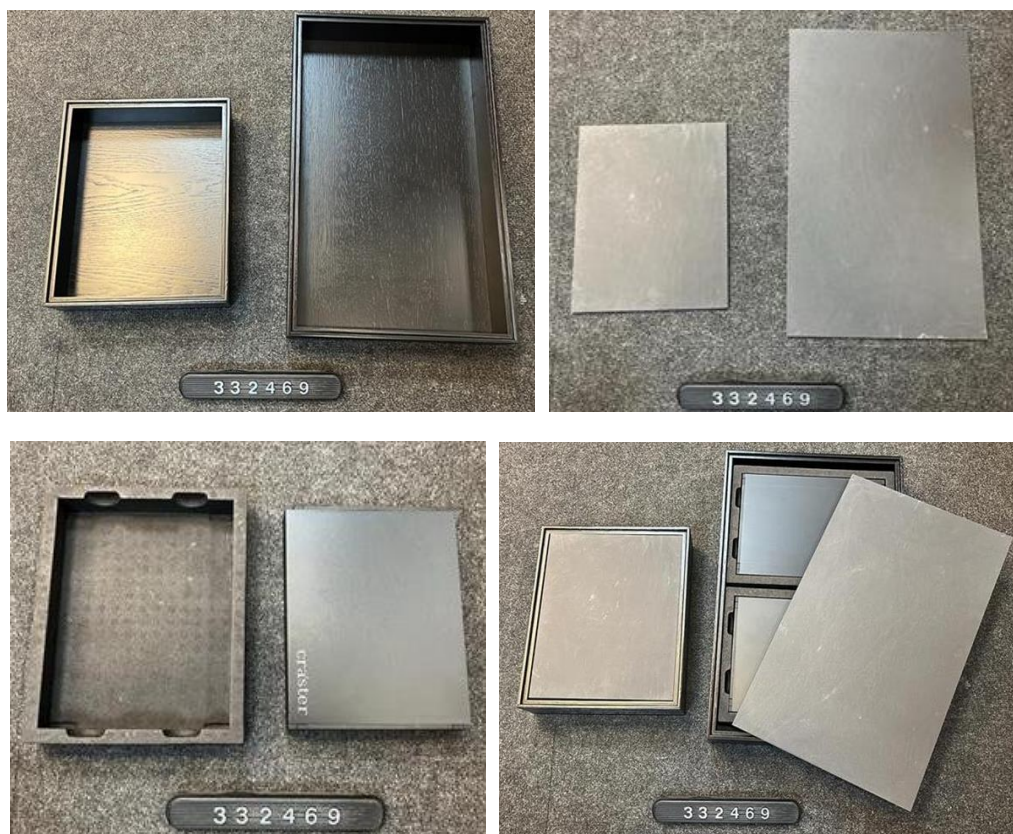
This document is issued by the Company subject to its General Conditions of Service, available on request or accessible at [www.sgs.com/terms\\_and\\_conditions.htm](http://www.sgs.com/terms_and_conditions.htm) and, for electronic format documents, subject to Terms and Conditions for Electronic Documents at [www.sgs.com/terms\\_e-document.htm](http://www.sgs.com/terms_e-document.htm). Attention is drawn to the limitation of liability, indemnification and jurisdiction issues defined therein. Any holder of this document is advised that information contained hereon reflects the Company's findings at the time of its intervention only and within the limits of Client's instructions, if any. The Company's sole responsibility is to its Client and this document does not exonerate parties to a transaction from exercising all their rights and obligations under the transaction documents. This document cannot be reproduced except in full, without prior written approval of the Company. Any unauthorized alteration, forgery or falsification of the content or appearance of this document is unlawful and offenders may be prosecuted to the fullest extent of the law."

Unless otherwise stated the results shown in this test report refer only to the sample(s) tested and such sample(s) are retained for 30 days only. This document cannot be reproduced except in full, without prior approval of the Company.

## Conclusion

The samples of "FLOW Cooling Tray 1.1 size" and "FLOW Cooling Tray 1.2 size" showed a reduction of temperature to less than to -1°C at the slate board at the start of the test when the freezer packs just removed from freezer and inserted in to the trays.

There was a steady increase in temperature over the four hour period with all of the trays being less than 18°C at the end of the test period.



SGS authenticate the photo on original report only

\*\*\* End of Report \*\*\*

This document is issued by the Company subject to its General Conditions of Service, available on request or accessible at [www.sgs.com/terms\\_and\\_conditions.htm](http://www.sgs.com/terms_and_conditions.htm) and, for electronic format documents, subject to Terms and Conditions for Electronic Documents at [www.sgs.com/terms\\_e-document.htm](http://www.sgs.com/terms_e-document.htm). Attention is drawn to the limitation of liability, indemnification and jurisdiction issues defined therein. Any holder of this document is advised that information contained hereon reflects the Company's findings at the time of its intervention only and within the limits of Client's instructions, if any. The Company's sole responsibility is to its Client and this document does not exonerate parties to a transaction from exercising all their rights and obligations under the transaction documents. This document cannot be reproduced except in full, without prior written approval of the Company. Any unauthorized alteration, forgery or falsification of the content or appearance of this document is unlawful and offenders may be prosecuted to the fullest extent of the law."

Unless otherwise stated the results shown in this test report refer only to the sample(s) tested and such sample(s) are retained for 30 days only. This document cannot be reproduced except in full, without prior approval of the Company.